

TRUE RGB+W  
ADAPT





Project: \_\_\_\_\_ TYPE: \_\_\_\_\_

- Now available with our ADAPT globe family (5", 3.5" and 2.5" globe)
- Tivoli's proprietary algorithm controls RGB+W (5000K) LEDs for superior color saturation and TRUE white performance with only 3 channels of DMX other than a standard 4 channel system
- True RGB +W Technology delivers more than 16 million combinations of pure and precise color tones
- Audio enhanced with MADRIX 5 software
- Individually control each globe with DMX512 protocol for a unique and personal environment
- Each globe is auto-addressed for fast set-up and connection
- Tivoli's proprietary PCB design delivers a high level performance and easy replacement
- Two mounting options for suspended and a twist-off cap for surface applications
- 24V DC Low voltage system for long runs
- Pre-molded twist connect male and female power leads for multiple runs
- IP67
- cULus listed
- 3 Year warranty

**Dimensions**





**Strand Order Guide**

**Note:** For suspension application, a catenary cable is required for proper installation. Please contact Tivoli for recommendations on unique mounting applications.

**Strand Order Guide - 12" OC** Max electrical run length (80 total globes each circuit): **80'**

| PRODUCT CODE                              | WIRE                                    | SPACING                  | LED TYPE  | GLOBE   | GLOBE SIZE  | LENGTH  | VOLTAGE                  |
|---|---|--------------------------|---|---|---|---|--------------------------|
| <b>LSTA</b><br>LSTA = ADAPT True<br>RGB+W | <b>BK</b> = Black<br><b>WH</b> = *White | <b>12</b><br>12 = 12" OC | <b>RGBW</b> = Red<br>Green Blue<br>+White 5000K | <b>ANA</b> = Ana<br><b>VIC</b> = *Victoria<br><b>GAB</b> = Gaby<br><b>LAU</b> = *Laura<br><b>GIN</b> = Gina<br><b>ANG</b> = Angela<br><b>KAT</b> = Katie<br><b>SUS</b> = *Susan<br><b>TON</b> = *Toni<br><b>LUC</b> = *Lucia<br><b>CG</b> = *Mix Globes | <b>2</b> = **2.5"<br><b>3</b> = **3.5"<br><b>5</b> = 5" | <b>10</b> = 10'<br><b>40</b> = 40'<br><b>80</b> = 80' | <b>24</b><br>24 = 24V DC |

\*Consult factory for MOQ and lead-time

\*\* 2.5", 3.5" AVAILABLE IN **ANG, GIN, KAT** ONLY Consult factory for MOQ and lead-time

**Strand Order Guide - 24" OC** Max electrical run length (80 total globes each circuit): **160'**

| PRODUCT CODE                              | WIRE                                    | SPACING                  | LED TYPE  | GLOBE   | GLOBE SIZE  | LENGTH  | VOLTAGE                  |
|---|---|--------------------------|---|---|---|---|--------------------------|
| <b>LSTA</b><br>LSTA = ADAPT True<br>RGB+W | <b>BK</b> = Black<br><b>WH</b> = *White | <b>24</b><br>24 = 24" OC | <b>RGBW</b> = Red<br>Green Blue<br>+White 5000K | <b>ANA</b> = Ana<br><b>VIC</b> = *Victoria<br><b>GAB</b> = Gaby<br><b>LAU</b> = *Laura<br><b>GIN</b> = Gina<br><b>ANG</b> = Angela<br><b>KAT</b> = Katie<br><b>SUS</b> = *Susan<br><b>TON</b> = *Toni<br><b>LUC</b> = *Lucia<br><b>CG</b> = *Mix Globes | <b>2</b> = **2.5"<br><b>3</b> = **3.5"<br><b>5</b> = 5" | <b>10</b> = 10'<br><b>80</b> = 80'<br><b>160</b> = 160' | <b>24</b><br>24 = 24V DC |

\*Consult factory for MOQ and lead-time

\*\* 2.5", 3", 4" AVAILABLE IN **ANG, GIN, KAT** ONLY Consult factory for MOQ and lead-time

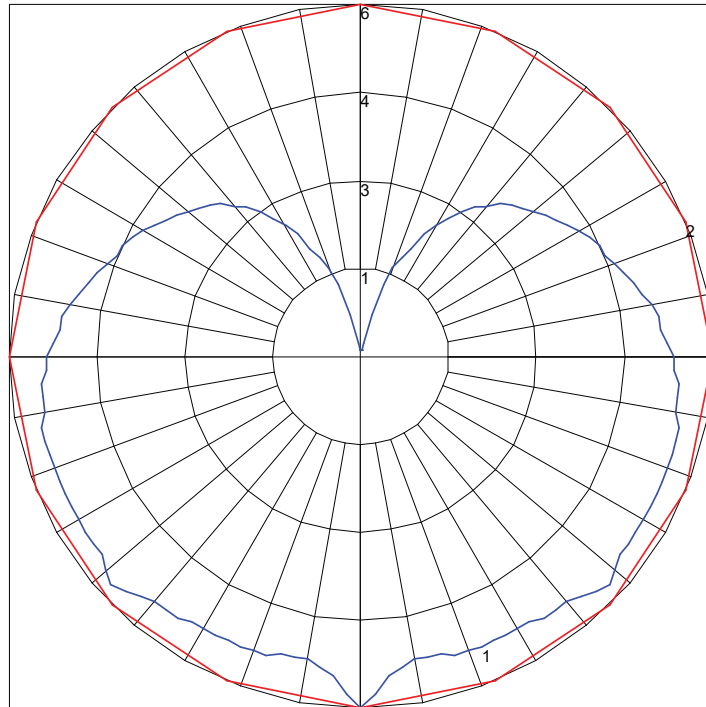
**Specifications**

| <b>Output</b>                       |  |
|-------------------------------------|--|
| Kelvin Temperature                  | Red / Green / Blue / White (5000K)   |
| Pixels                              | 1 pixel/globe  |
| Lumens (lm/globe)                   | 55 (all color fully on)  |
| <b>Electrical</b>                   |  |
| Input Voltage                       | 24V DC   |
| Power Consumption (W/globe)         | 1  |
| Maximum Run (based on O.C. spacing) | 80' @ 12" O.C., 160' @ 24" O.C. (Total 80 globes per circuit)  |
| <b>Control</b>                      |  |
| Control System                      | DMX 512  |
| Address Setting                     | Auto Addressing  |
| <b>Physical</b>                     |  |
| Socket Housing                      | PVC  |
| Globe                               | Glass (Shatter resistance assist with silicone coating - Glass may still break under certain conditions) |
| Mounting                            | Surface Mount, Suspended   |
| Operating Temperature               | -20°C to 50°C (-4°F to 122°F)  |
| Storage Temperature                 | -40°C to 80°C (-40°F to 176°F)   |
| <b>Certification and Testing</b>    |  |
| Certification                       | cULus  |
| Environment                         | Wet Location   |
| IP Rating                           | IP67   |
| Warranty                            | 3 Years  |

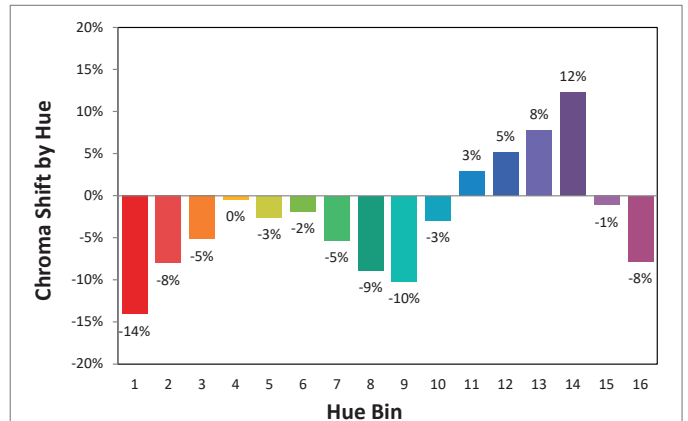
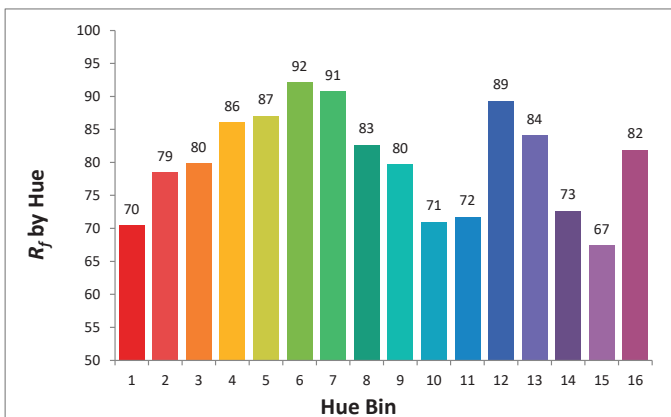
| <b>Weights (5" Globe)</b>    | <b>12"</b> | <b>24"</b> |
|------------------------------|------------|------------|
| lb/ft                        | 0.48       | 0.42       |
| lb/ft with catenary cable    | 0.50       | 0.44       |
| <b>Weights ( 3.5" Globe)</b> |            |            |
| lb/ft                        | 0.32       | 0.26       |
| lb/ft with catenary cable    | 0.34       | 0.28       |
| <b>Weights ( 2.5" Globe)</b> |            |            |
| lb/ft                        | 0.18       | 0.12       |
| lb/ft with catenary cable    | 0.20       | 0.14       |
| <b>Weights (ST19 Globe)</b>  |            |            |
| lb/ft                        | 0.49       | 0.41       |
| lb/ft with catenary cable    | 0.51       | 0.43       |

**Photometrics - based on 5" Lucia Globe**

Maximum Candela = 5.6  
 Located At Horizontal Angle = 0  
 Vertical Angle = 0  
 #1 Vertical Plane Through Horizontal Angles (0-180) (Through Max. Cd.)  
 #2 Vertical Cone Through Vertical Angle (0) (Through Max. Cd.)

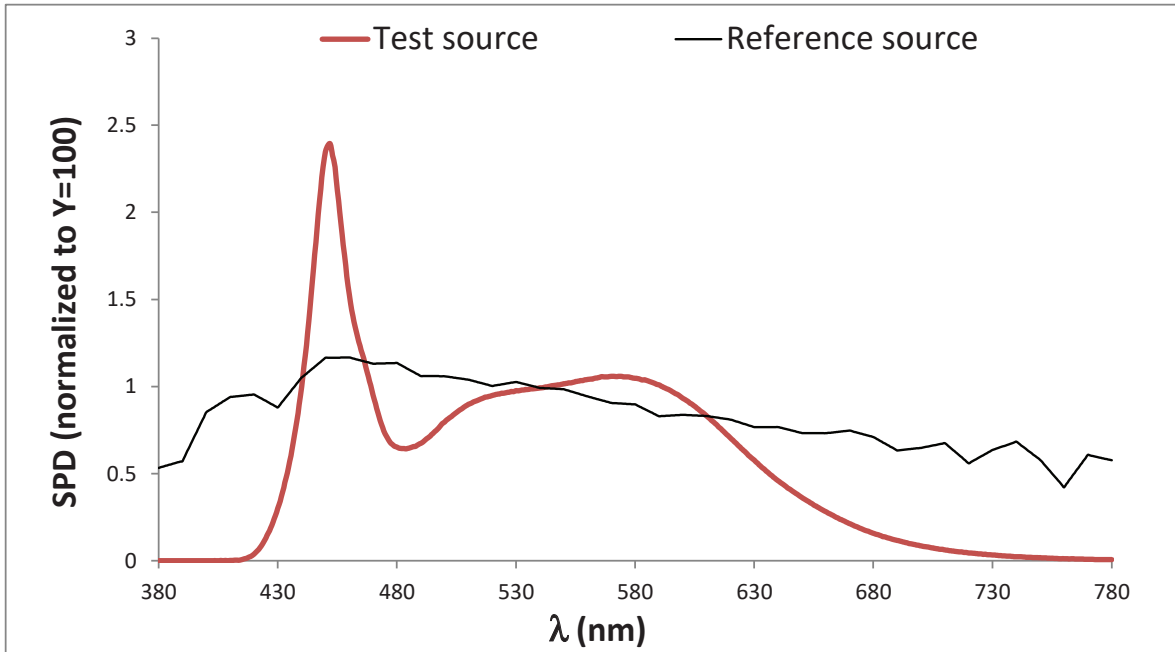


**TM-30-15**

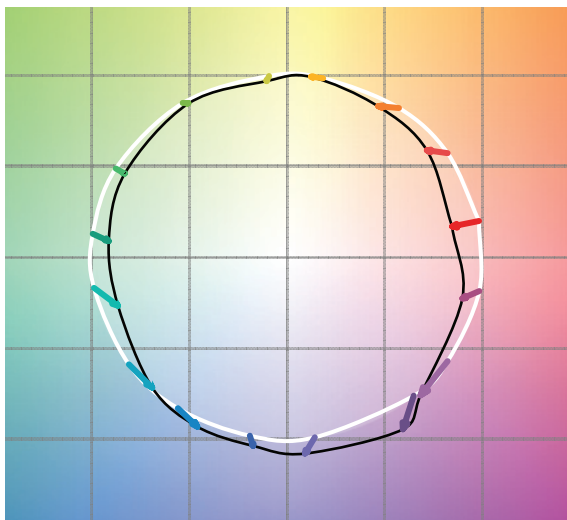


TM-30-15

| $R_f$ | $R_g$ | CCT (K) | $D_{uv}$ | $u'$   | $v'$   |
|-------|-------|---------|----------|--------|--------|
| 81    | 94    | 6887    | 0.0030   | 0.1961 | 0.4642 |



Color Vector Graphic



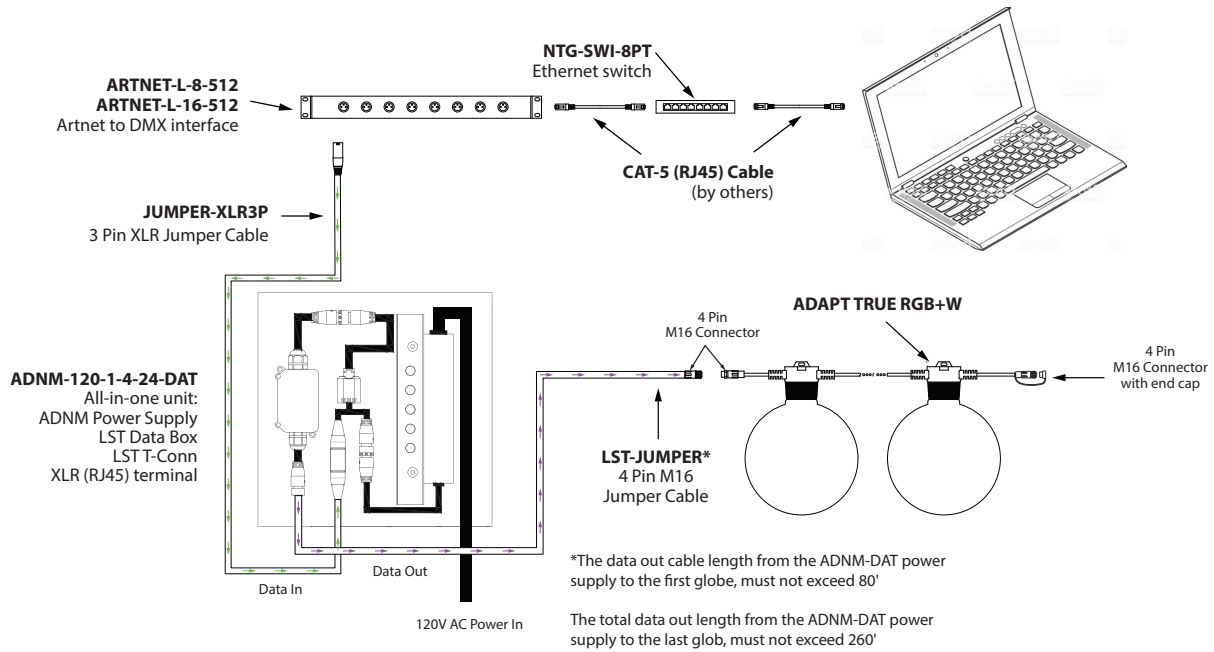
| Hue Bin | $R_f$ | Graphic Shifts (%) |      |
|---------|-------|--------------------|------|
|         |       | Chroma             | Hue  |
| 1       | 70    | -14%               | 0%   |
| 2       | 79    | -8%                | 7%   |
| 3       | 80    | -5%                | 9%   |
| 4       | 86    | 0%                 | 6%   |
| 5       | 87    | -3%                | 2%   |
| 6       | 92    | -2%                | -2%  |
| 7       | 91    | -5%                | 0%   |
| 8       | 83    | -9%                | 2%   |
| 9       | 80    | -10%               | 12%  |
| 10      | 71    | -3%                | 17%  |
| 11      | 72    | 3%                 | 14%  |
| 12      | 89    | 5%                 | 3%   |
| 13      | 84    | 8%                 | -7%  |
| 14      | 73    | 12%                | -15% |
| 15      | 67    | -1%                | -23% |
| 16      | 82    | -8%                | -6%  |

**Wiring Diagram**

**Online Operation**

**MADRIX (Live)**

This is a live control performance setup. Widely used for concerts or performance-based manipulation. Use of a live network is necessary for communication between MADRIX software and Litesphere True RGB+W.

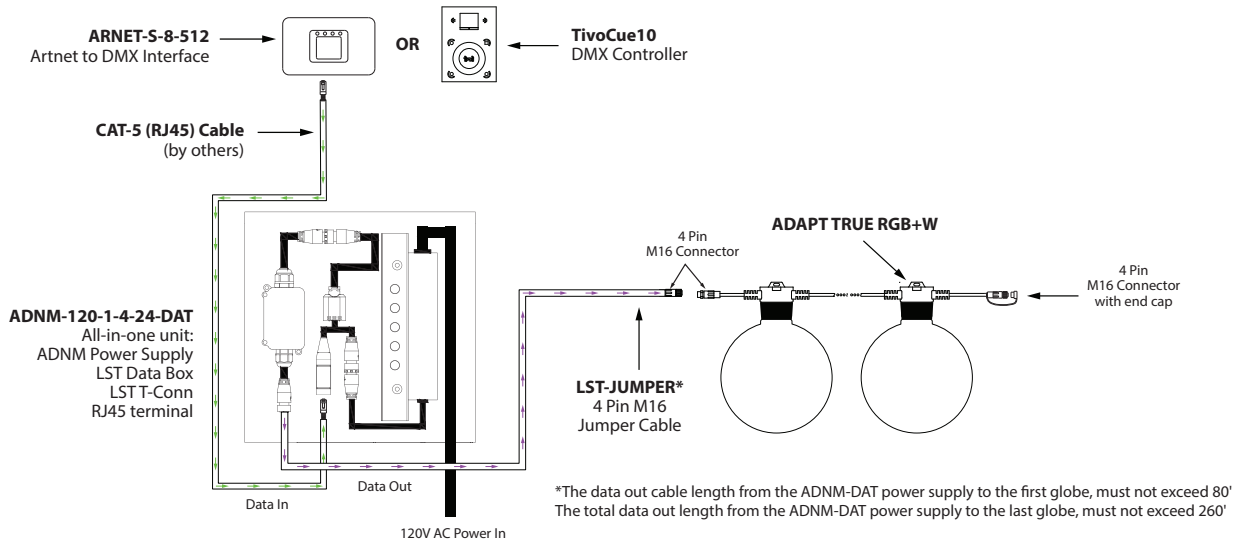


**Off-line Operation**

**TivoCUE (Preset)**

Programmed via CUE software and recorded to a Micro SD card for data transfer into TivoCUE control. This is a stand-alone feature with no need for network support by software (CUE) once recorded and transferred to in-wall DMX control hardware. Please refer to TivoCue10 User Manual for additional information.

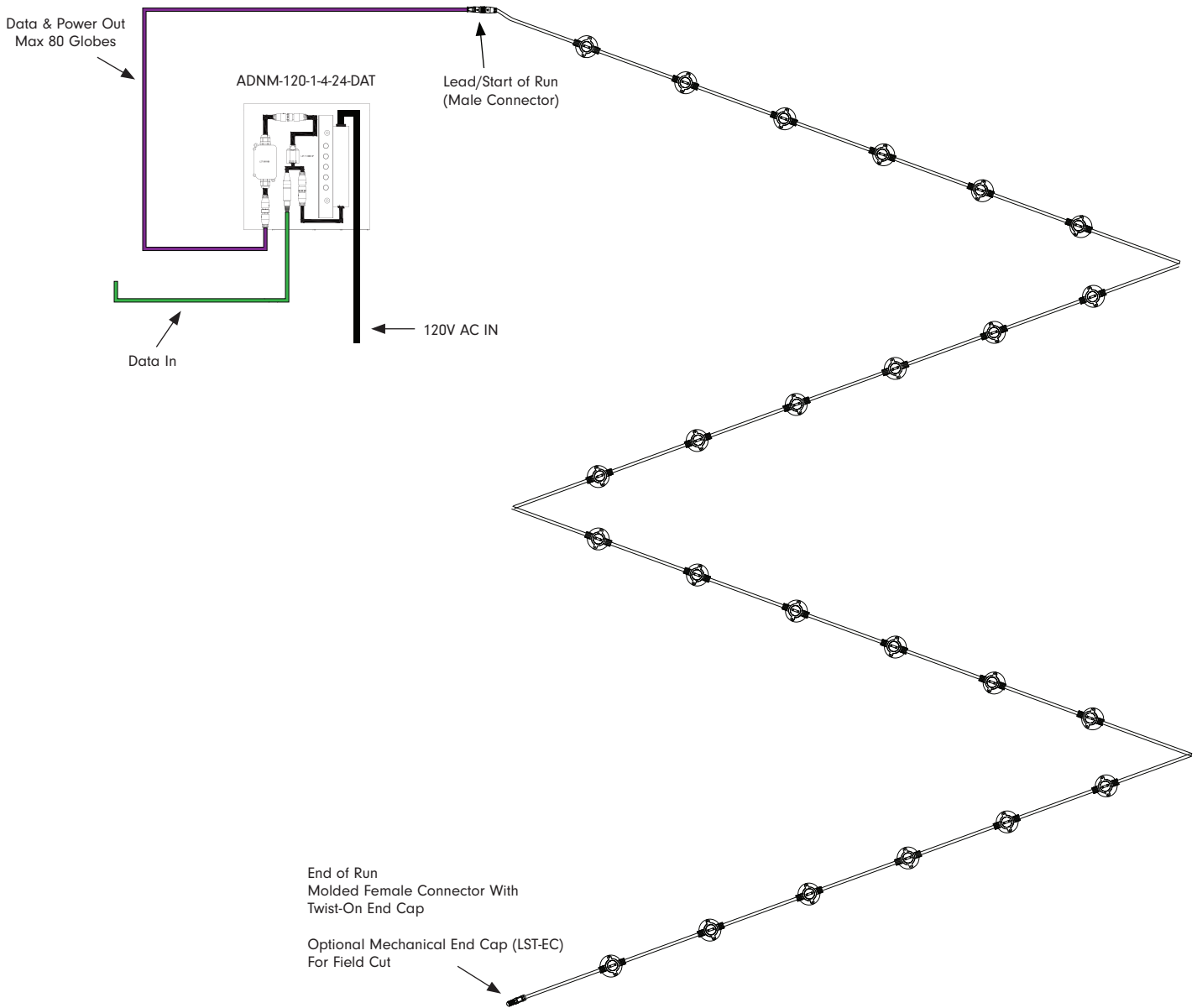
Note: TivoCue10 controls a maximum of 1 universes with 80 pixels (globes) total. Consult factory for 160 pixels (globes) maximum option.



## Wiring Single Run with single circuit 96W

**WARNING!** Risk of Product Failure

The data & power out cable length from the ADN-M-DAT power supply to the first globe, must not exceed 80'



**⚠ Warnings: Risk of injury or fire.**

Do not cover any luminaire as the covering may cause it to overheat.

Do not install this lighting system where the exposed bare contacts can be shorted or contact any conductive material to reduce the risk of fire and burns.

Do not install any luminaire closer than 6 inches (15.25cm) from any curtain, or similar combustible material.

Do not use any luminaire if damaged; such as, broken globe, loose connections, or frayed wire insulation. Inspect periodically.

Do not submerge any luminaire in liquid. Use waterproof connectors for all outdoor applications.

Do not secure any luminaire with staples, nails or like means that might damage the wire insulation. Secure it by using screws through the base.

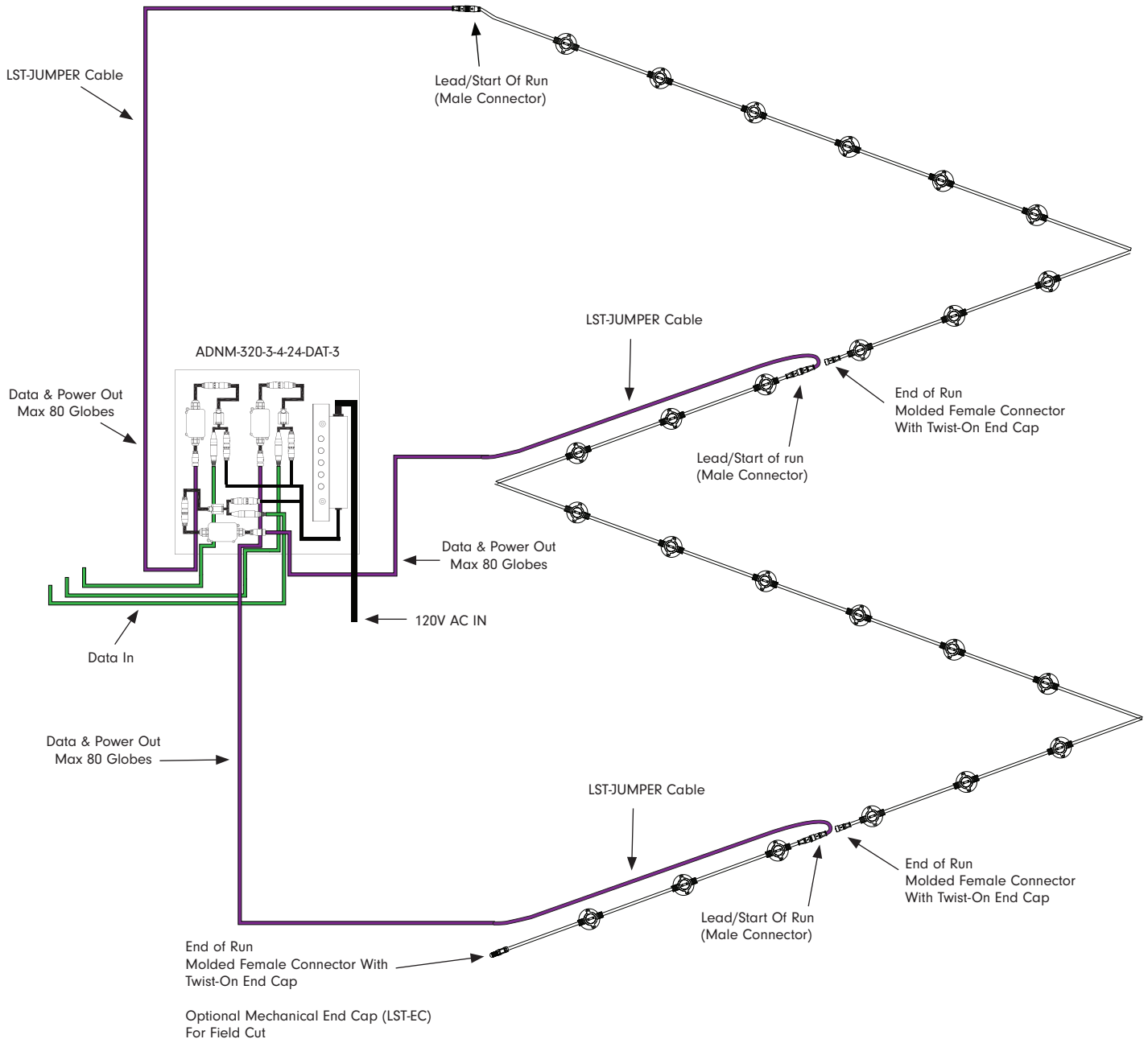
Do not run any luminaire at an operating temperature exceeding -20°C to 50°C (-4°F to 122°F)



## Wiring Multiple Runs with multi circuit 96W

**WARNING!** Risk of Product Failure

The data & power out cable length from the ADNM-DAT power supply to the first globe, must not exceed 80'



**⚠ Warnings: Risk of injury or fire.**

Do not cover any luminaire as the covering may cause it to overheat.

Do not install this lighting system where the exposed bare contacts can be shorted or contact any conductive material to reduce the risk of fire and burns.

Do not install any luminaire closer than 6 inches (15.25cm) from any curtain, or similar combustible material.

Do not use any luminaire if damaged; such as, broken globe, loose connections, or frayed wire insulation. Inspect periodically.

Do not submerge any luminaire in liquid. Use waterproof connectors for all outdoor applications.

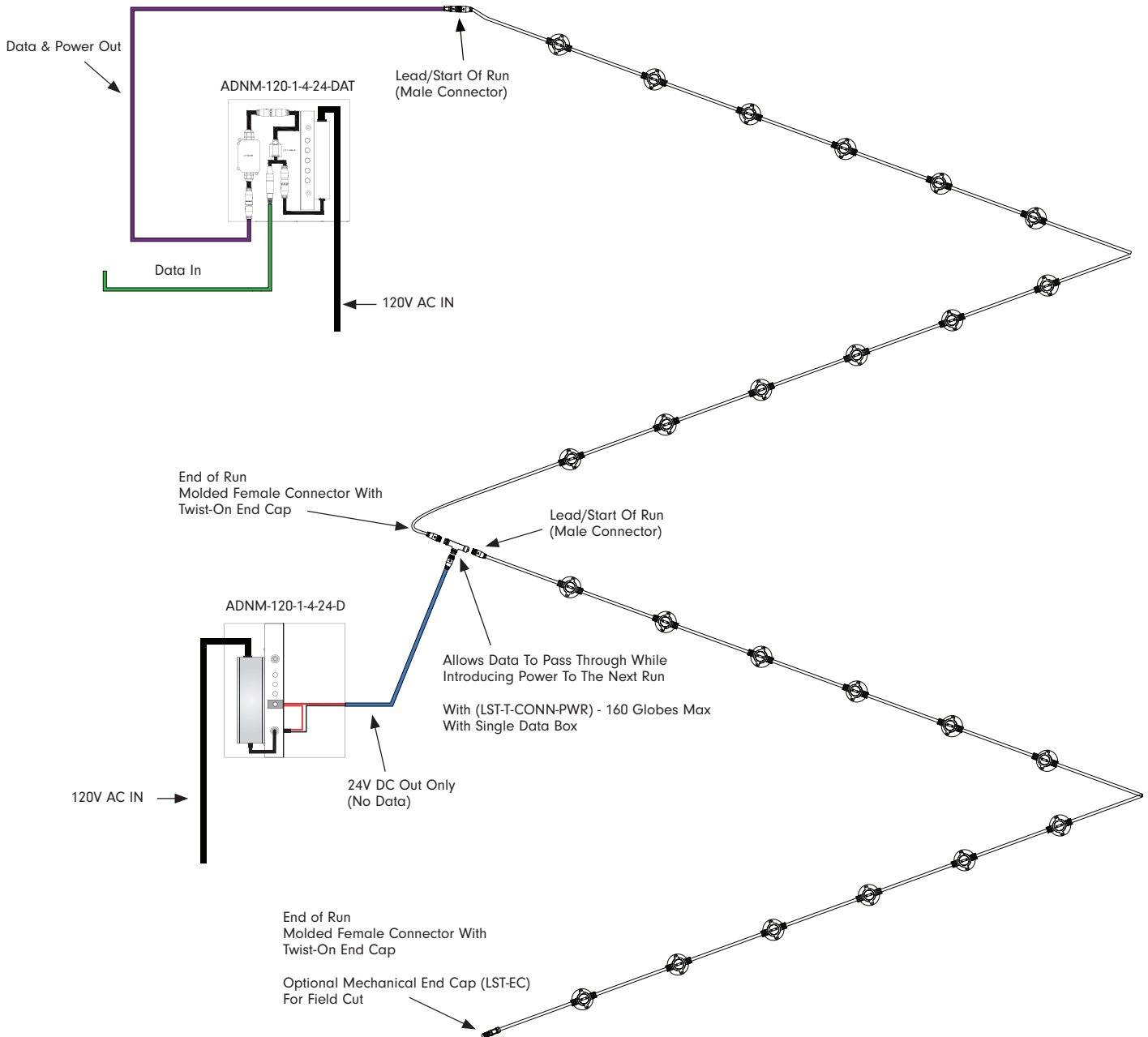
Do not secure any luminaire with staples, nails or like means that might damage the wire insulation. Secure it by using screws through the base.

Do not run any luminaire at an operating temperature exceeding -20°C to 50°C (-4°F to 122°F)

## Wiring Dual Runs with single circuit 96W

**WARNING!** Risk of Product Failure

The data & power out cable length from the ADNMM-DAT power supply to the first globe, must not exceed 80'  
 The total data out length from the ADNMM-DAT power supply to the last globe, must not exceed 260'



**⚠ Warnings: Risk of injury or fire.**

Do not cover any luminaire as the covering may cause it to overheat.

Do not install this lighting system where the exposed bare contacts can be shorted or contact any conductive material to reduce the risk of fire and burns.

Do not install any luminaire closer than 6 inches (15.25cm) from any curtain, or similar combustible material.

Do not use any luminaire if damaged; such as, broken globe, loose connections, or frayed wire insulation. Inspect periodically.

Do not submerge any luminaire in liquid. Use waterproof connectors for all outdoor applications.

Do not secure any luminaire with staples, nails or like means that might damage the wire insulation. Secure it by using screws through the base.

Do not run any luminaire at an operating temperature exceeding -20°C to 50°C (-4°F to 122°F)

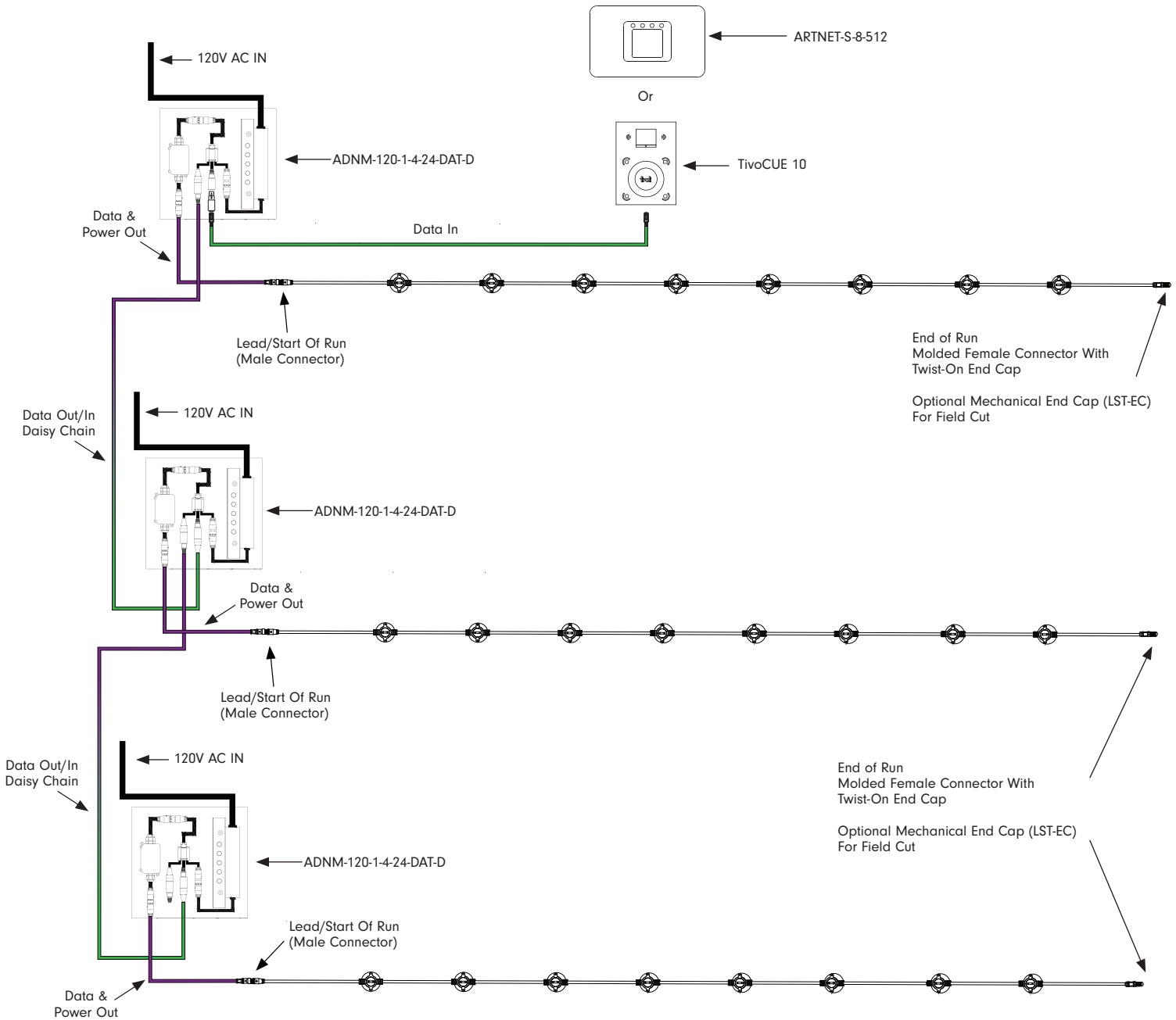
## Daisy-Chain Multiple Runs within single Universe

The below example setup is for 160 globes max on (1) universe with different globe count per strand. This process includes manually programming each Data Box for a specified DMX address according to your setup. Each Data Box must be addressed in house by the factory before shipment.

**WARNING! Risk of Product Failure**

The data & power out cable length from the ADNM-DAT-D power supply to the first globe, must not exceed 80'

The total data out length from the ADNM-DAT-D power supply to the last globe, must not exceed 260'



**⚠ Warnings: Risk of injury or fire.**

Do not cover any luminaire as the covering may cause it to overheat.

Do not install this lighting system where the exposed bare contacts can be shorted or contact any conductive material to reduce the risk of fire and burns.

Do not install any luminaire closer than 6 inches (15.25cm) from any curtain, or similar combustible material.

Do not use any luminaire if damaged; such as, broken globe, loose connections, or frayed wire insulation. Inspect periodically.

Do not submerge any luminaire in liquid. Use waterproof connectors for all outdoor applications.

Do not secure any luminaire with staples, nails or like means that might damage the wire insulation. Secure it by using screws through the base.

Do not run any luminaire at an operating temperature exceeding -20°C to 50°C (-4°F to 122°F)

**Accessories**



**LST-JUMPER-X-XX**  
4 PIN jumper cable, IP67  
X = B (Black), W\* (White)  
XX = 5, 10, 20 (lengths in ft)



**JUMPER-XLR3P-X**  
Jumper Cable 3-PIN XLR  
X = 5, 10, 25 (lengths in ft)



**LST-EC-X**  
End Cap  
X = B (Black), W\* (White)



**LST-T-CONN-PWR-X**  
T-CONN power pass through  
X = B (Black), W\* (White)



**LST-PWR-2-X-XX**  
2 pin power lead (for T-CONN-PWR)  
X = B (Black), W\* (White)  
XX = 10 (10'), 15 (15'), 20 (20'), 25 (25')



**NTG-SWI-8PT**  
NETGEAR 8-Port Gigabit Ethernet Unmanaged Switch



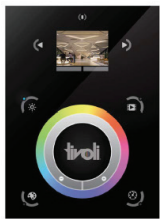
**NTG-SWI-16PT**  
NETGEAR 16-Port Gigabit Ethernet Unmanaged Switch



**ARTNET-L-X-512**  
X = 8, 16 (ports)  
8 or 16 port universe Artnet to DMX interface, 16 port 8192 DMX channels 8 port 4096 DMX channels (Online only)

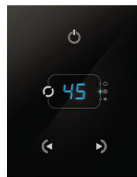
\*Consult factory for MOQ and lead-time

**Controls & Software**



Touchscreen

**TVOQ-10-XX-7**  
XX = BK (Black), WH (White)  
1024 DMX channel, 500 scene,  
10 zone, glass touch screen



Touchscreen

**TVOQ-2-BK**  
512 DMX channel, 99 scene,  
1 zone, glass touch screen



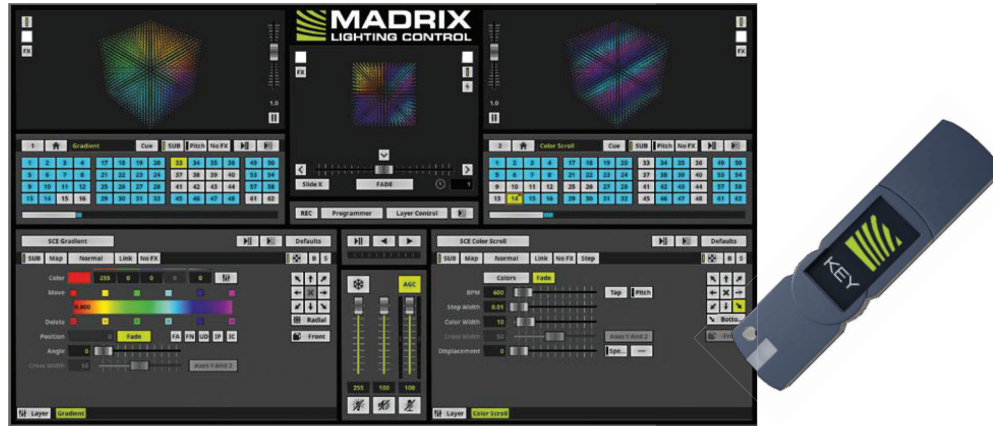
Touchscreen

**ARTNET-S-8-512**  
8 port universe Artnet to DMX interface, 4096 DMX channels (Online or Offline option)



Cue™ and CuePro™ softwares are specifically designed for the TivoCUE™ in-wall DMX controls and includes an array of tools required by the latest DMX lighting fixtures. Intuitive, with easy-to-use effects that can be dropped into timelines, and multi-zone synchronization capabilities allow you to program a project effortlessly.

**MADRIX 5 Key & Software Levels**



**MADRIX KEY**

A USB dongle unlocks the software’s full output. You can freely switch between different PCs as it is not bound to a specific one. It only needs to be activated on-line once.

**MADRIX 5 LICENSE UPGRADES**

You can easily upgrade your MADRIX 5 KEY to any higher license at any time, increasing the available output.

| MADRIX 5 Key & Software Cat No | MDRX-LC-5S     | MDRX-LC-5E       | MDRX-LC-5B       | MDRX-LC-5P           | MDRX-LC-5U           | MDRX-LC-5M           |
|--------------------------------|----------------|------------------|------------------|----------------------|----------------------|----------------------|
| Level                          | START          | ENTRY            | BASIC            | PROFESSIONAL         | ULTIMATE             | MAXIMUM              |
| <b>DMX-Based Output</b>        |                |                  |                  |                      |                      |                      |
| DMX Channels                   | 1,024          | 4,096            | 16,384           | 65,536               | 262,144              | 1,048,576            |
| DMX Universe Example           | 2              | 8                | 32               | 128                  | 512                  | 2,048                |
| RGB Voxels Example             | 341            | 1,365            | 5,461            | 21,845               | 87,381               | 349,525              |
| <b>DVI-Based Output</b>        |                |                  |                  |                      |                      |                      |
| DVI Voxels                     | 4,096          | 16,384           | 262,144          | 1,048,576            | 2,097,152            | 2,097,152            |
| Render Resolution Example      | 64 X 64 PIXELS | 128 X 128 PIXELS | 512 X 512 PIXELS | 1,024 X 1,024 PIXELS | 2,048 X 1,024 PIXELS | 2,048 X 1,024 PIXELS |

## Mounting Options

### SURFACE/FLUSH

For surface mount applications, remove the top suspension-plate by turning counter-clockwise until off. Place socket flush against the desired surface and mount using proper screws according to substrate.



### SUSPENDED

Suspended mounting will use a combination of LS-Cable, LS-Locks with LS-UVZP. Tension the cable wire with our LS-TT (Tension Tool) for desired sag (Please adhere to local city code for suspended application).

**Note:** For suspension application, a catenary cable is required for proper installation. Please contact Tivoli for recommendations on unique mounting applications.



## Mounting Accessories



**LS-CABLE-60 Catenary Cable Kit - 60'**  
(1/8" galvanized cable includes 2 cables locks for use with loads up to 200lbs)

**LS-CABLE-110 Catenary Cable Kit - 110'**  
(1/8" galvanized cable includes 2 cables locks for use with loads up to 200lbs)

**LS-CABLE-500 Catenary Cable Kit - 500'**  
(1/8t" galvanized cable for use with loads up to 200lbs)



### LS-UVZP-BK-XX UV Zip Ties

**XX = 30 (30pc), 50 (50pc) Bag set.** UV resistant, heavy duty ties. Maximum weight up to 100 lbs./per tie.



### LS-LOCK-X Cable Lock

**X = 2 (2 Locks), 4 (4 locks)** Includes (1) cable release key. Cable Lock for 1/8th inch cable, Heavy-duty lockable fasteners support loads up to 200 lbs. Can be easily adjusted without the use of tools.

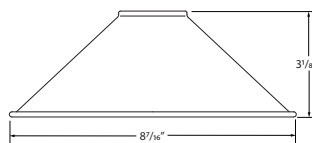


### LS-TT

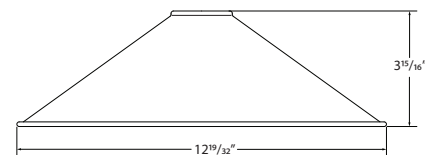
Catenary Cable Tensioning Tool up to 880lbs with minimal effort due to the 6:1 gear drive mechanism. Integral torque gauge controls the load applied to the wire, giving consistent tension every time and optimizing the life of the wire.

**Light Shades Order Guide**

**HAT**



**SHADE-HT-BK-BK-8**  
Light Shade - HAT  
8.3" Black Top, Black Bottom  
Weight: 0.38 lb



**SHADE-HT-BK-BK-13\***  
Light Shade - HAT  
12.6" Black Top, Black Bottom  
Weight: 1.06 lb  
**SHADE-HT-BK-CO-13\***  
Light Shade - HAT  
12.6" Black Top, Copper Bottom  
Weight: 1.06 lb

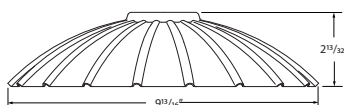
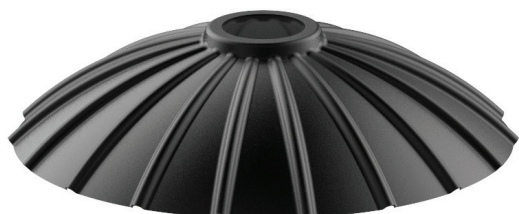
\*Consult factory for lead time and MOQ

**DISH**

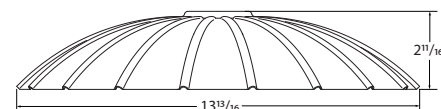


**SHADE-DS-BK-BK-10**  
Light Shade - DISH  
10.2" Black Top, Black Bottom  
Weight: 0.72 lb

**FLOWER**

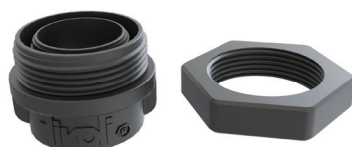


**SHADE-FL-BK-BK-10**  
Light Shade - FLOWER  
9.8" Light Shade, Black Top, Black Bottom  
Weight: 0.54 lb



**SHADE-FL-BK-BK-13**  
Light Shade - FLOWER  
13.8" Light Shade, Black Top, Black Bottom  
Weight: 1.1 lb

**Accessories**



**SHADE-LS2ADP-XX-01** 2.0 Light Shade Adapter  
X = BK (Black), WH (White)  
PVC Black Adapter - Sold individually.

**SHADE-LS2ADP-XX-25** 2.0 Light Shade Adapter  
X = BK (Black), WH (White)  
PVC Black Adapter Kit - Sold in packs of 25

**SHADE-LS2ADP-XX-50** 2.0 Light Shade Adapter  
X = BK (Black), WH (White)  
PVC Black Adapter Kit - Sold in packs of 50

**Replacement Globes 5"**

G125 Globe (Weight: 4 oz./ea.)



Shatter Resistant  
Silicone Coating



Ana  
**LSA-ANA-N**



Angela  
**LSA-ANG-N**



Gina  
**LSA-GIN-N**



Gaby  
**LSA-GAB-N**



Katie  
**LSA-KAT-N**



Susan\*  
**LSA-SUS-N**



Toni\*  
**LSA-TON-N**



Lucia\*  
**LSA-LUC-N**



Victoria\*  
**LSA-VIC-N**



Laura\*  
**LSA-LAU-N**

ST19 Globe (Weight: 1.6 oz./ea.)

\*Consult Factory for MOQ and Lead Time.



Replacement Globes 3.5", 2.5"



Shatter Resistant  
Silicone Coating



Angela  
**LSA-ANG-X-N**  
X = 3 (3.5"), 2 (2.5")



Gina  
**LSA-GIN-X-N**  
X = 3 (3.5"), 2 (2.5")



Katie  
**LSA-KAT-X-N**  
X = 3 (3.5"), 2 (2.5")

Replacement Parts



**LST-RGBW-24**  
Litesphere True RGB+W LED  
sold each



**LSA2-GA-X**  
X = B (black), W (white)  
Litesphere ADAPT 2.0 Globe Adapter  
sold each



**LST-T-CONN-DSY**  
Daisy-Chain T Connector, IP67  
3-PIN XLR Male  
3-PIN XLR Female  
5-PIN M16 Female for LED  
2-PIN M16 female (power)



**DMX3-CAT5-ADPTR**  
DMX Adapter  
3-pin XLR Female to RJ45



**LST-T-CONN-3P**  
T Connector, IP67  
3-PIN XLR Male for DMX  
5-PIN M16 Female for LED  
2-PIN M16 female to 2-PIN male



**LST-DATABX**  
Data Box  
(for custom programming consult factory)

## Power Supplies

| DESCRIPTION                     | CAT NO            | APPLICATION      | PRIMARY VOLTAGE         | SECONDARY VOLTAGE | CIRCUIT BREAKERS | MAX LOAD | CIRCUIT CAPACITY |
|---------------------------------|-------------------|------------------|-------------------------|-------------------|------------------|----------|------------------|
| ADNM Series Class 2 Transformer | ADNM-120-1-4-24-D | Indoor / Outdoor | 100-277V AC<br>50/60 HZ | 24V DC            | 1                | 96W      | 4A               |

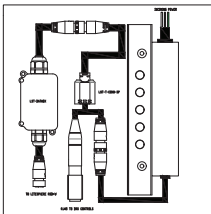
### ADNM-DAT / ALL - IN - ONE

Litesphere True RGB+W ADNM-DAT power supply is an all-in-one unit that comes with: Power Supply, LST Data Box, LST T-Conn, RJ45-to-XLR connection. All contained within our outdoor rated NEMA 3 box. Box size can vary depending on number of circuits.

| DESCRIPTION                     | CAT NO                | APPLICATION      | PRIMARY VOLTAGE         | SECONDARY VOLTAGE | CIRCUIT BREAKERS | DATA BOXES | MAX LOAD | CIRCUIT CAPACITY |
|---------------------------------|-----------------------|------------------|-------------------------|-------------------|------------------|------------|----------|------------------|
| ADNM Series Class 2 Transformer | ADNM-120-1-4-24-DAT   | Indoor / Outdoor | 100-277V AC<br>50/60 HZ | 24V DC            | 1                | 1          | 96W      | 4A               |
|                                 | ADNM-240-2-4-24-DAT-2 |                  |                         |                   | 2                | 2x96W      | 2x4A     |                  |
|                                 | ADNM-320-3-4-24-DAT-3 |                  |                         |                   | 3                | 3x96W      | 3x4A     |                  |

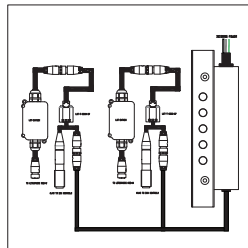
#### ADNM-120-1-4-24-DAT

120-277V AC / 24V DC, 96W / 1 CIRCUIT X 4A  
1 LS RGB+W DATA BOX(s), (1) LST-T-CONN



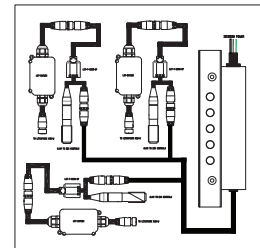
#### ADNM-240-2-4-24-DAT-2

120-277V AC / 24V DC, 192W / 2 CIRCUITS X 4A  
2 LS RGB+W DATA BOX(s), (1) LST-T-CONN



#### ADNM-320-3-4-24-DAT-3

120-277V AC / 24V DC, 288W / 3 CIRCUITS X 4A  
3 LS RGB+W DATA BOX(s), (1) LST-T-CONN



### ADNM-DAT-D / ALL - IN - ONE

Litesphere True RGB+W ADNM-DAT-D power supply is an all-in-one unit that comes with: Power Supply, LST Data Box, LST T-Conn-DSY. All are contained within our outdoor rated NEMA 3 box that allows you to daisy-chain multiple runs (not to exceed 160 globes) to (1) DMX universe. Manual addressing of each Data Box must be done at the factory.

| DESCRIPTION                     | CAT NO                | APPLICATION      | PRIMARY VOLTAGE         | SECONDARY VOLTAGE | CIRCUIT BREAKERS | DATA BOXES | MAX LOAD | CIRCUIT CAPACITY |
|---------------------------------|-----------------------|------------------|-------------------------|-------------------|------------------|------------|----------|------------------|
| ADNM Series Class 2 Transformer | ADNM-120-1-4-24-DAT-D | Indoor / Outdoor | 100-277V AC<br>50/60 HZ | 24V DC            | 1                | 1          | 96W      | 4A               |

#### ADNM-120-1-4-24-DAT-D

120-277V AC / 24V DC, 96W / 1 CIRCUIT X 4A  
1 LS RGB+W DATA BOX(s), (1) LST-T-CONN-DSY

